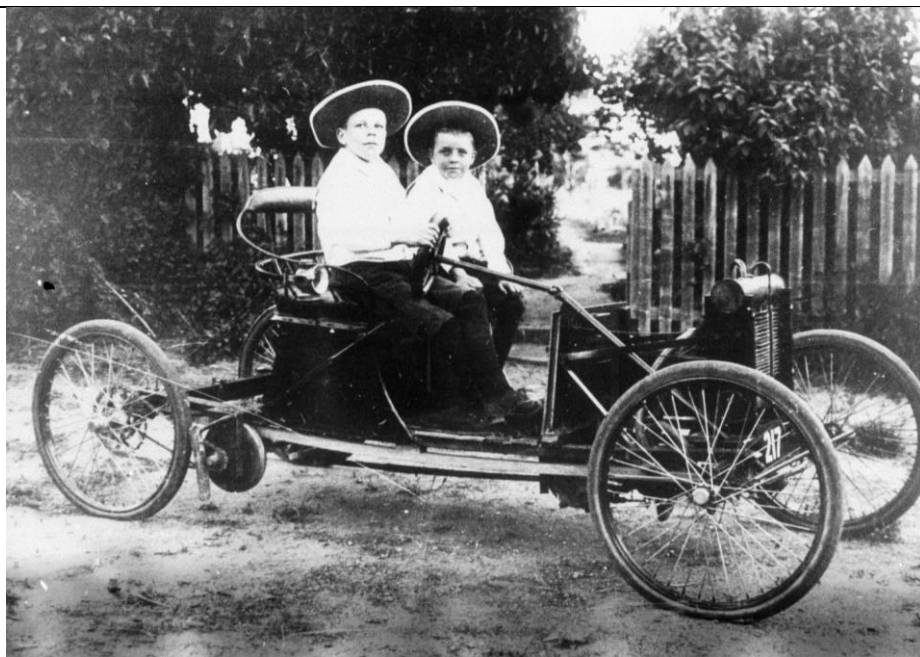


Great Journeys



Australia today is a vast country with a network of roads, tracks and bridges across nearly eight million square kilometres used by all sorts of vehicles. Since the early 1900s people have completed amazing journeys across all sorts of lands.

1. Explore the Museum to find the cars, bikes and trucks listed on the next page and match them to the people who made these great journeys. (One has been done for you.)
2. Find the **red letter** placed on each vehicle and write it in the space provided at the bottom of this page to complete word puzzle.



1904	U 1909	1910	1924	1938	1949	1958	1965
1972	1977	1980	1993	1995	2004	2010	

1. Draw a line to match the cars, bikes and trucks to the people.
2. Find these cars, bikes and trucks and spot the red letter to solve the word puzzle on page one.

Albert Ohlmeyer	1993 Honda motorcycle
Hans Tholstrop	1904 Jigger
SA Metro Fire Brigade	1910 Matchless motorcycle
Harry Monsoor	1972 Kenworth road train
Michael Schumacher	2004 Formula One Ferrari
Clyde Johnson Jnr	1909 Merryweather fire engine
Graebbers	1958 Land Rover
Australia Post	1980 Toyota Land Cruiser
Ed Ordynski	1938 Diamond T bus
Bill Waite	1924 Graham Brothers truck
Valmai Hankel	1949 Hillman Minx car
John Todd	2010 R.E. 92 Tyre
Bridgestone Australia	1965 B.M.W motorcycle
Golding Enterprises	1995 Holden VR Commodore
Leyland Brothers	1977 Leyland Mini Moke

